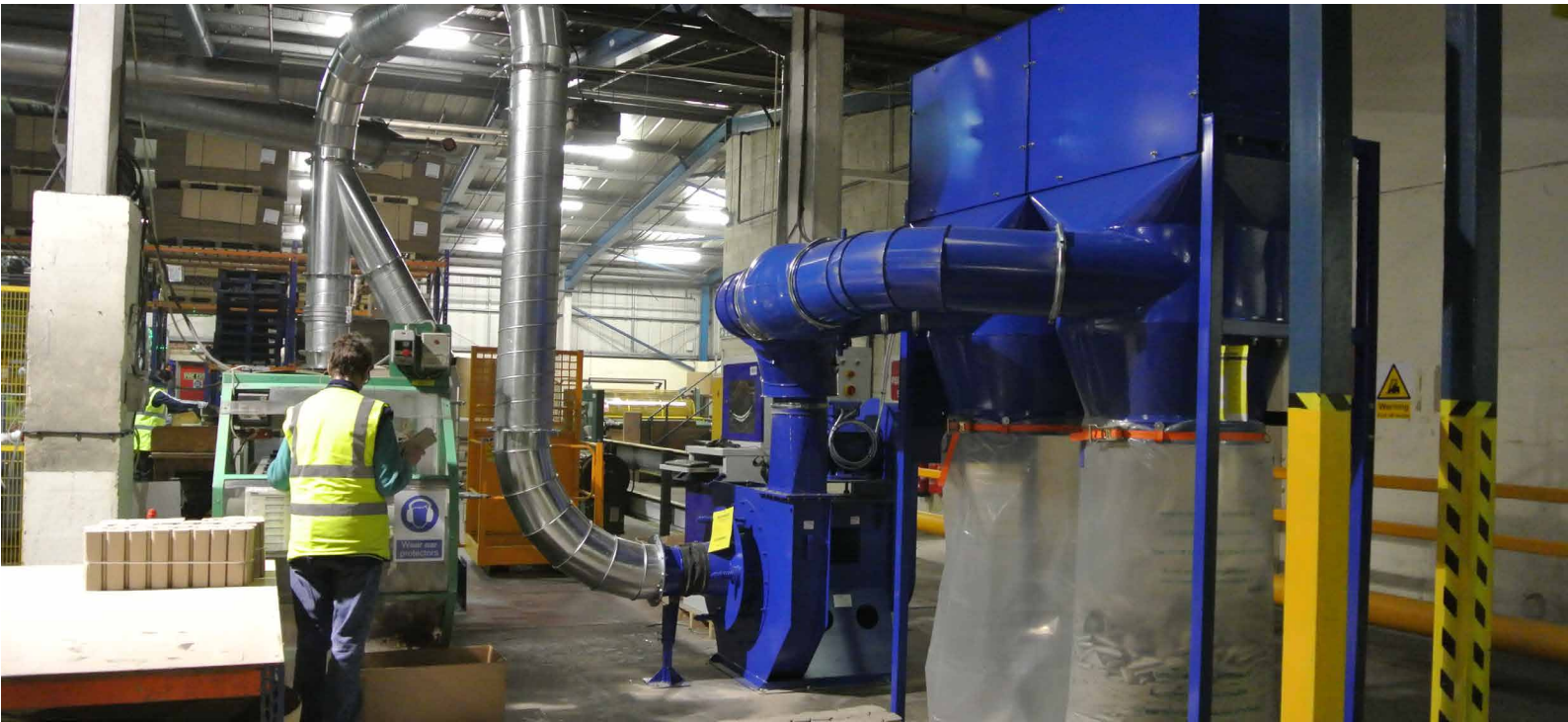




Trim Master Bagging Unit



A simple trim and dust extraction unit that automatically removes and collects waste at high speed from production machinery.

The Trim Master unit is built with integral replaceable filtration media to prevent dust escape to atmosphere to ensure efficient, clean, trouble free operation.

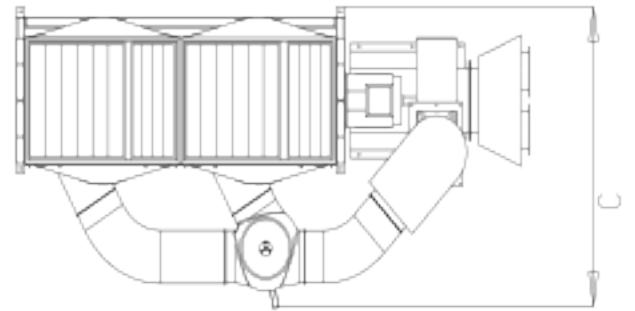
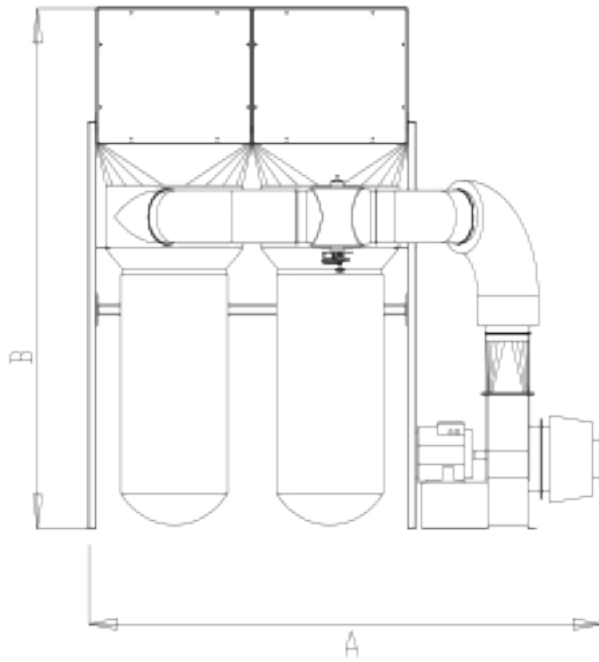
Trim specification ducting is used throughout and connected to the production machine and to the Trim Master unit. If tough difficult trims (films and foils) are extracted a rotary trim cutter can be incorporated prior to the fan, to chop the trim into manageable size pieces to maintain a continuous operation.

The Trim Master can be supplied as a standard stand-alone unit or customized to suit the exact needs of the individual application.

Each Trim Master unit is built to last; using heavy gauge welded steel construction finished in high quality paint. We offer a range of three standard models designed to suit the vast range of materials, air volumes and operating conditions.

Features:

- Fast easy installation
- Integral starter built in
- Twin Collection bags for 'on the run' changeover
- Low power consumption, between 3kW and 5.5kW depending on model
- Clean operation with in-built filtration to collect dust
- Low noise level
- Waste delivered to plastic sacks for easy disposal
- Ideal for use with single machines
- Can be located local to production line
- Allows production machines to operate at full capacity



Model Ref	TM 80	TM 100	TM160
Maximum Air Volume	1600 m ³ /h	3000 m ³ /h	5600m ³ /h
Motor Size	3kw	3kw	5.5kw
Width (A) mm	2800	3000	3200
Height (B) mm	2700	2700	2700
Depth (C) mm	1100	1200	1400
Duct diameter Typical	150	200	280
Collection bags	2	2	2

